

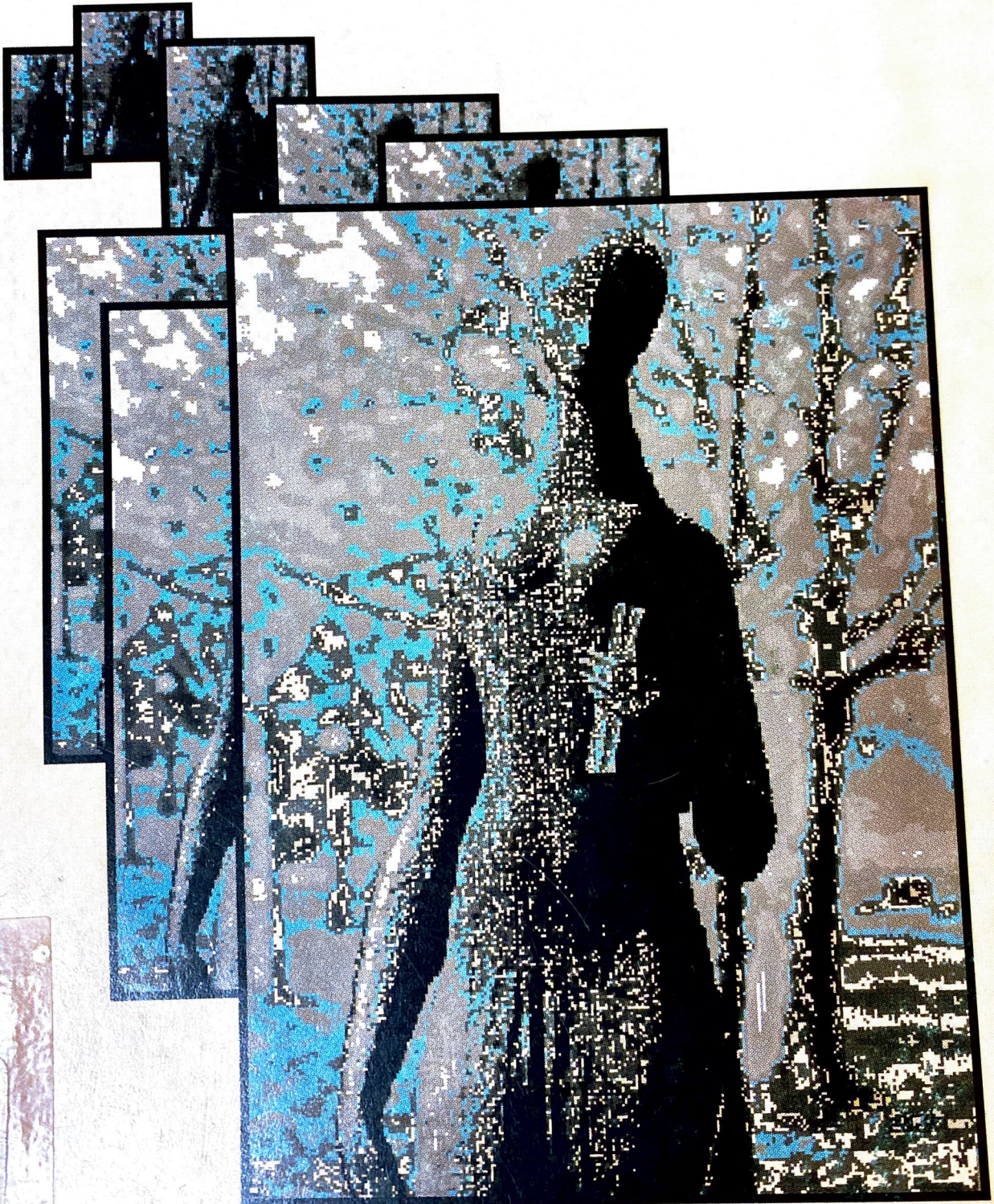


**MIDDLE EAST TECHNICAL UNIVERSITY**

**UNDERGRADUATE CATALOG**

**1990-1992**

**ANKARA TURKEY**



## DEPARTMENT OF FOREIGN LANGUAGE EDUCATION

### PROFESSORS

- CRAIK, Wendy Ann : B.SA., Ph.D., University of London.  
UYYSAL, Ahmet Edip: M.A., Aberdeen University; Dr., Ankara  
Üniversitesi.  
BEAR (COŞKUNOĞLU), Ayten: Lisans, Ankara Üniversitesi, M.A.,  
Bryn Mawr College; Dr., İstanbul Üniversitesi.  
UMUNÇ, Himmet: Lisans, Ankara Üniversitesi; Dr., University of  
London.

### ASSOCIATE PROFESSORS

- BEAR, Joshua M.: B.A., University of California, Berkeley; Bilim  
Uzmanlığı, Dr., Hacettepe Üniversitesi.  
BEZEL, Nail: B.A., State University College of New York; Dr., Hacettepe  
Üniversitesi.  
ÇİLELİ, Meral (*Assistant Chairman*): Lisans, Y. Lisans, Ankara  
Üniversitesi; Associateship, University of London; Dr., Ankara  
Üniversitesi.  
İÇÖZ, Nursel (*Chairman*): Lisans, Y. Lisans, Dr., Ankara Üniversitesi.  
KARABAŞ, Seyfi: B.A., Robert College; M.A., Ph.D., University of  
California, Berkeley.  
KAŞ, Ali: Lisans, Ankara Üniversitesi, Lisans, Sciences Politiques (IEP),  
Maitrise, Doctorat, Université de Provence.  
KOÇ, Sabri: Lisans, Hacettepe Üniversitesi; M.A., University of  
Lancaster, Dr., Hacettepe Üniversitesi.  
NORMAN, Ünal: Lisans, Y. Lisans, Dr., Ankara Üniversitesi.  
NOYAN, Evin: Lisans, Ankara Üniversitesi; Dr., Atatürk  
Üniversitesi.

### ASSISTANT PROFESSOR

- ÇAPAN, Selma: Lisans, Ankara Üniversitesi; Bilim Uzmanlığı, Dr.,  
Hacettepe Üniversitesi.  
VANCE, Ülker: Lisans, Hacettepe Üniversitesi; Y. Lisans, Dr., Hacettepe  
Üniversitesi.

### INSTRUCTOR

- ÇALIŞKAN, Sevda: Lisans, Y. Lisans, Dr., Ankara Üniversitesi.

## RESEARCH ASSISTANTS

ÇORLU, Şükri: Lisans, Y.Lisans, Ankara Üniversitesi.  
DOYRAN, Feyza: Lisans, Hacettepe Üniversitesi.  
HAMAN, İham: B.S., Al-Fateh University.  
KONYALIOĞLU (ONARAN), Sevil: Lisans, Ankara Üniversitesi;  
Y.Lisans, Ankara Üniversitesi.  
ÖZBAŞOĞLU, Funda: B.A., METU.  
ÖZBEK, Nurdar: Lisans, Gazi Üniversitesi.  
YILMAZ, Deniz: B.S., METU.

**GENERAL INFORMATION:** The Department of Foreign Language Education offers a B.S. program in English Language Teaching. Taking into consideration the latest developments in the field, students are provided with a solid foundation in English language, methodology, educational sciences, literature and linguistics in order to prepare them to become fully qualified teachers of English in secondary schools. The Department also offers a wide selection of elective courses in literature and linguistics to students in other Faculties.

## UNDERGRADUATE CURRICULUM

### FIRST YEAR

| First Semester                         | Second Semester                         |
|--|---|
| FLE 101 English Grammar I              | FLE 102 English Grammar II              |
| FLE 103 Readings in English I          | FLE 104 Readings in English II          |
| FLE 105 Spoken English I               | FLE 106 Spoken English II               |
| FLE 107 English Composition I          | FLE 108 English Composition II          |
| FLE 111 Survey of English Literature I | FLE 118 Survey of English Literature II |

### SECOND YEAR

| Third Semester                              | Fourth Semester                          |
|---|--|
| FLE 201 English Composition III             | FLE 202 English Composition IV           |
| FLE 203 Introduction to Linguistics I       | FLE 204 Introduction to Linguistics II   |
| FLE 209 Readings in English III             | FLE 210 Readings in English IV           |
| FLE 211 British Culture and Society         | FLE 212 English Grammar III              |
| FLE 200 Introduction to Education Elective* | FLE 220 Educational Psychology           |
|   | FLE 240 Educational Sociology Elective * |

### THIRD YEAR

| Fifth Semester                                 | Sixth Semester                                  |
|--|---|
| FLE 301 English-Turkish Translation I          | FLE 302 English-Turkish Translation II          |
| FLE 303 Semantics                              | FLE 306 Comparative English-Turkish Structure   |
| FLE 313 English Literature I                   | FLE 314 English Literature II                   |
| FLE 317 Readings in English V                  | FLE 318 English Composition V                   |
| EDS 320 Introduction to Curriculum Development | EDS 330 Measurement and Evaluation in Education |
| Elective*                                      | Elective*                                       |

### FOURTH YEAR

| Seventh Semester                              | Eighth Semester                        |
|---|--|
| FLE 401 Turkish-English Translation I         | FLE 402 Turkish-English Translation II |
| FLE 403 English Language Teaching Methodology | FLE 406 Practice Teaching              |
| FLE 407 English Literature III                | FLE 408 English Literature V           |
| FLE 415 English Literature IV                 | FLE 416 English Literature VI          |
| FLE 429 Advanced English Structure            | FLE 422 Senior Research Seminar        |
|   | FLE 424 English Composition VI         |

\* Approved by the Department.

## DESCRIPTION OF COURSES

|   |  |
|---|--|
| <b>FLE 101 English Grammar I</b><br>(4-0) 4   | <b>FLE 104 Reading in English II</b><br>(4-0) 4                              |
| A thorough study of English grammar at the intermediate level, with emphasis on usage.                                | A continuation of FLE 103, with emphasis on non-fiction texts.               |
| <b>FLE 102 English Grammar II</b><br>(4-0) 4  | <b>FLE 105 Spoken English I</b><br>(4-0) 4                                   |
| A continuation of FLE 101, with emphasis on usage.  | Development of students' communicative competence in conversational English. |
| <b>FLE 103 Readings in English I</b><br>(4-0) 4   | <b>FLE 106 Spoken English II</b><br>(4-0) 4                                  |
| Readings in fiction and non-fiction aimed at reading improvement, structural reinforcement, and vocabulary expansion. | A continuation of FLE 105, with further practice in spoken expression.       |

**FLE 107 English Composition I**  
(4-0) 4  
Paragraph writing, with emphasis on unity, coherence, order, and adequate development.

**FLE 108 English Composition II**  
(4-0) 4  
A continuation of FLE 107, with emphasis on different methods of development.

**FLE 117 Survey of English Literature I**  
(4-0) 4  
Basic concept of literary analysis and critical appreciation. Study of selected texts from various genres and periods.

**FLE 118 Survey of English Literature II**  
(4-0) 4  
A continuation of FLE 117.

**FLE 201 English Composition III**  
(4-0) 4  
A continuation of FLE 108; expository essay writing.

**FLE 202 English Composition IV**  
(4-0) 4  
A continuation of FLE 201 into various forms of essay writing.

**FLE 203 Introduction to Linguistics I**  
(3-0) 3  
A general, eclectic approach to the systematic study of language.

**FLE 204 Introduction to Linguistics II**  
(3-0) 3  
A continuation of FLE 203, with emphasis on syntax.

**FLE 207 English Grammar III**  
(3-0) 3  
A thorough review of English grammar at

an advanced level, with emphasis on complex structures which are problematic for Turkish students.

**FLE 208 British Culture and Society**  
(3-0) 3  
A survey of English social and cultural history with emphasis on the forces which have shaped contemporary British culture and society. A survey of English social and cultural history with emphasis on the forces which have shaped contemporary British culture and society.

**FLE 209 Readings in English III**  
(4-0) 4  
Intensive study of advanced level texts.

**FLE 210 Reading in English IV**  
(4-0) 4  
A continuation of FLE 209.

**FLE 227 Masterpieces of World Literature I**  
(3-0) 3  
A study of selections from world literature to provide an acquaintance with the masterpieces and to train students in critical appreciation of the works studied.

**FLE 228 Masterpieces of World Literature II**  
(3-0) 3  
A continuation of FLE 227.

**FLE 229 Selections from Shakespeare I**  
(3-0) 3  
Students are introduced to the works of a major dramatist of past and present times, Shakespeare, through a general survey of his works and detailed study of selected plays.

**FLE 230 Selections from Shakespeare II**  
(3-0) 3  
A continuation of FLE 229.

**FLE 231 Modern Drama I** (3-0) 3  
Drama is introduced as a literally genre with emphasis on traditional modes, modern movements and principles of critical evaluation. A brief history of drama from its origins to the birth of modern theater is given. Representative plays chosen from the beginning of the Modern Age are discussed in detail.

**FLE 232 Modern Drama II** (3-0) 3  
FLE 232 continues the survey of Modern European and American Drama. Significant plays from various countries are studied.

**FLE 233 Literature and Society I**  
(3-0) 3  
Examining literature as a source of social evidence and testimony, this course deals with literary works which provide a variety of commentaries on and insights into the problems which are at the root of the perennial conflicts and tensions within society.

**FLE 234 Literature and Society II**  
(3-0) 3  
The alienation of the individual in society as treated by various authors in selected works is examined and discussed as a means of understanding the factors which lead to such estrangements as well as the attitude of man towards his alienation.

**FLE 235 Modern Fiction I** (3-0) 3  
Representative examples of modern fiction are studied and criticized as a means of achieving a deeper understanding of selected authors' attitudes towards and treatment of basic human issues.

**FLE 236 Modern Fiction II** (3-0) 3  
The literary influences which shape modern life are discussed within the scope of selected novels which focus on the nature of human existence today.

**FLE 239 From the Epic to the Novel I** (3-0) 3  
This course attempts to place the novel genre in a literary tradition in Western civilization. Three motifs are identified, delimited, and are then traced in significant examples of the oral epic, romance and early novels. The attempt is to show how the three motifs are consistently used to shape audience responses through adaptations to the demands of different genres.

**FLE 240 From the Epic to the Novel II** (3-0) 3  
A continuation of FLE 239.

**FLE 253 Modern Poetry I** (3-0) 3  
Poetry is studied as a literary genre with origins in traditional modes. Modern movements and principles of critical evaluation are emphasized. Representative English and American poems of the modern age are examined in detail.

**FLE 254 Modern Poetry II** (3-0) 3  
A continuation of FLE 253.

**FLE 255 Selection from American Literature I** (3-0) 3  
Chronological study of selections drawn from the range of American literature to reflect the important contributions made by writers from various movements and modes. Emphasis will be on the characteristic individual works in relation to vari-

ous aspects of the American experience.

**FLE 256 Selection from American Literature II** (3-0) 3  
A continuation of FLE 255.

**FLE 257 Psychological Trends in Literature I** (3-0) 3  
Basic principles, concepts and theories of psychology are introduced together with relevant trends in literature to form a bridge between psychological trends.

**FLE 258 Psychological Trends in Literature II** (3-0) 3  
As literature is greatly affected by different psychological trends, the course attempts to investigate literary works in the light of various psychological trends.

**FLE 259 Moral Aspects in Child Literature I** (3-0) 3  
An introduction to different theories and differing views as to the determinants of morality and different aspects of moral development and the major current approaches to moral development with examples of application in child literature.

**FLE 260 Moral Aspects in Child Literature II** (3-0) 3  
Examining child literature as a source for promoting moral development and identifying and interpreting the moral aspects in relation to moral development.

**FLE 263 History of the Theatre I** (3-0) 3  
Comparative study of how currents and crosscurrents which influenced dramatic art in different countries have paved the way to the theatre of modern times. Emphasis on how dramatic works reflect man's search for his identity through the ages.

**FLE 264 History of the Theatre II** (3-0) 3  
A continuation of FLE 263.

**FLE 267 The Short Story in World Literature I** (3-0) 3  
Following a brief study of the nature of this literary form, a comprehensive collection representing the most outstanding short stories written in the past hundred years by Continental English and American writers will be thoroughly examined.

**FLE 268 The Short Story in World Literature II** (3-0) 3  
The survey will continue with more stories reflecting a variety of styles and subjects, with reference to main trends.

**FLE 281 General Linguistics I \*** (3-0) 3  
Features and functions of human communication; components of language, methods of linguistic analysis with emphasis on transformational models. Study of major transformational rules.

**FLE 282 General Linguistics II \*** (3-0) 3  
Analysis of phonological components of language. Brief survey of linguistic change and language variation. Language acquisition.  
\*Not open to students majoring in English Language Teaching.

**FLE 285 Language and Culture** (3-0) 3  
Beginning with a discussion of language as a social institution, this course will treat various aspects of the reciprocal relationship between language and culture, including language and world view, language and nationalism, naming and word

magic, linguistic taboos and national language policy.

**FLE 286 Language and Society** (3-0) 3  
Basic sociolinguistic concepts; Language and socialization, language and social setting, pluralism and verbal repertoire.

**FLE 289 Language and Society** (3-0) 3  
Basic sociolinguistic concepts; attention, perception, memory; the actual production and processing of language.

**FLE 291 Comparative French-English Structure** (4-0) 4  
An introduction to French grammatical structure and a comparison of French and English structures.

**FLE 292 Reading Comprehension** (4-0) 4  
Reading relevant passages aimed at the improvement of reading comprehension, structural reinforcement and vocabulary expansion.

**FLE 293 Spoken French I** (4-0) 4  
Development of students' communicative competence in French with special emphasis on problematic structures.

**FLE 297 German Grammar I** (4-0) 4  
An introduction to basic German grammar and vocabulary.

**FLE 298 German Grammar II** (4-0) 4  
A continuation of German 297.

**FLE 301 English-Turkish Translation I** (4-0) 4  
An introduction to English-Turkish translation with emphasis on structural and lexical problems.

**FLE 302 English-Turkish Translation II** (4-0) 4  
A continuation of FLE 301.

**FLE 303 Semantics** (3-0) 3  
Adapting insights from linguistic semantics, this course aims to develop students vocabulary within the framework of semantic field theory, componential analysis and collocational properties.

**FLE 306 Comparative English-Turkish Structure** (4-0) 4  
A comparison of the linguistic structures of English and Turkish with implications for language teaching.

**FLE 309 American Culture and Society** (3-0) 3  
A survey of American social and cultural history with emphasis on contemporary American cultural and social life.

**FLE 313 English Literature I** (4-0) 4  
A survey of the major works of William Shakespeare and detailed study of selected plays.

**FLE 314 English Literature II** (3-0) 3  
Introduction to the Victorian novel. Detailed study of selected works.

**FLE 317 Readings in English V** (3-0) 3  
Prose and verse selections reflecting the aesthetic and intellectual achievements of

the Enlightenment will be studied in detail.

**FLE 318 English Composition V**  
(3-0) 3

Library research and mechanics of term paper writing.

**FLE 325 Selections from the English Novel I** (3-0) 3

Detailed study of novels by major British writers.

**FLE 326 Selections from the English Novel II** (3-0) 3

A continuation of FLE 325.

**FLE 327 Text Analysis in German I** (4-0) 4

Detailed analysis of the language through text study with special emphasis on sentence structure.

**FLE 328 Text Analysis in German II** (4-0) 4

A continuation of GER 327.

**FLE 329 English-German Translation I** (4-0) 4

A comparative study of English and German through translating simple texts.

**FLE 330 English-German Translation II** (4-0) 4

A continuation of German 329.

**FLE 401 Turkish-English I** (4-0) 4

An introduction to Turkish-English translation with emphasis on structural and lexical problems.

**FLE 402 Turkish-English II** (4-0) 4

A continuation of FLE 401.

**FLE 403 English Language Teaching Methodology** (4-0) 4

An introduction to principles and techniques of English Language Teaching.

**FLE 406 Practice Teaching** (2-0) 2

A practicum in Teaching English as a foreign Language to secondary school students under staff supervision.

**FLE 407 English Literature III** (3-0) 3

Study of selected 20th century English novels.

**FLE 408 English Literature V** (3-0) 3

A continuation of FLE 407. Study of selected 20th century English novels.

**FLE 415 English Literature IV** (3-0) 3

Study of selected 20th century English plays.

**FLE 416 English Literature VI** (4-0) 4

Study of the works of various English poets.

**FLE 424 English Composition VI** (3-0) 3

Stylistic techniques in expository and related types of writing.

**FLE 429 Advanced English Structure** (3-0) 3

A thorough review of English grammar at the advanced level, with emphasis on teaching techniques.

## GRADUATE SCHOOL DEPARTMENT OF FOREIGN LANGUAGE EDUCATION

### AIMS AND OBJECTIVES OF GRADUATE PROGRAMS

By providing students with a firm foundation in the theoretical and applied aspects of English Language Teaching, the graduate program in ELT aims not only at training teachers of English but in providing the necessary background for those who intend to become program administrators and curriculum specialists as well as for those who intend to pursue Ph.D. study in ELT or applied linguistics.

As the graduate programs in ELIT aim at providing students with a thorough knowledge of English literature from the Middle Ages to our day, outstanding writers and their major works are studied, and the relationships between literature and intellectual trends and between literature and social problems are investigated. Since students are expected to develop a critical approach to literature, they are taught the critical theories from Plato to Poststructuralism. Such a program provides those who intend to teach English literature in high schools where the medium of instruction is English and those who intend to become research assistants in the English Literature Departments of universities with a broad basis of English literature and culture.

### CAREER OPPORTUNITIES

Our graduates from ELT can work as curriculum specialists, program administrators and testers in educational institutions, or as translators. Our graduates from ELIT can work as English teachers in high schools, preparatory schools of universities, and as research assistants in the English Departments of universities.

### GRADUATE STAFF AND MAJOR RESEARCH FIELDS

Ayten C. BEAR, Prof.Dr., Lisans, Ankara Üniversitesi; M.A., Bryn Mawr College;  
Dr., Istanbul Üniversitesi.

*Twentieth Century English Literature, Sociological and Psychological Approach to Literature, Existentialism.*

Wendy CRAIK, Prof.Dr., B.A., University of London; Ph.D., University of Leicester.

*The novels of Jane Austen.*

Seyfi KARABAŞ, Prof.Dr., B.A., Robert College; M.A., Ph.D., University of California, Berkeley.

*English Literature, Oral Turkish Folklore.*

Himmet UMUNÇ, Prof.Dr., Lisans, Ankara Üniversitesi; Ph.D., University of London.

*The Renaissance in English Literature; the Classic in European Literature.*

**Joshua M. BEAR**, Assoc.Prof.Dr., B.A., University of California, Berkeley; Bilim Uzmanlığı, Dr., Hacettepe Üniversitesi.

*Foreign Language Teaching; Lexiology, Sociolinguistics, Translation*

**Nail BEZEL**, Assoc.Prof.Dr., (on leave) B.A., State University College of New York; Dr., Hacettepe Üniversitesi.

*Utopian Literature, Science fiction, Poetry Translation.*

**Meral ÇİLELİ**, Assoc.Prof.Dr., Lisans, Bilim Uzmanlığı, Ankara Üniversitesi; Associateship, University of London; Dr., Ankara Üniversitesi.

*Development of Moral Judgement in Adolescence, Psychology Through Literature.*

**Nursel İÇÖZ**, (Chairman) Assoc.Prof.Dr. Lisans, Bilim Uzmanlığı, Dr., Ankara Üniversitesi.

*The English novel from its rise to the present day.*

**Sabri KOÇ**, Assoc.Prof.Dr., Dipl., Gazi Eğitim Enstitüsü; Lisans, Hacettepe Üniversitesi; M.A., Lancaster University; Dr., Hacettepe Üniversitesi.

*English Language Teaching (ELT) Methodology, Curriculum Development in ELT, In-Service Teacher Training, English for Specific Purposes, Computer-Assisted Language Teaching, ELT Testing, Linguistics.*

**Ünal NORMAN**, Assoc.Prof.Dr., Lisans, Bilim Uzmanlığı, Dr., Ankara Üniversitesi.

*Shakespeare, Modern drama, Teaching Writing, Drama in Language Teaching.*

**Evin NOYAN**, Assoc.Prof.Dr., (on leave) Lisans, Ankara Üniversitesi; Dr., Atatürk Üniversitesi.

*The English Novel from its emergence to the present day.*

**Sevda ÇALIŞKAN**, Asst.Prof.Dr., Lisans, Bilim Uzmanlığı, Dr., Ankara Üniversitesi.

*American Literature, Literary Theory and Criticism.*

**Selma ÇAPAN**, Assist.Prof.Dr., Lisans, Ankara Üniversitesi; Bilim Uzmanlığı, Dr., Hacettepe Üniversitesi.

*Child Language Acquisition, Second Language Learning Acquisition, General Linguistics, English Language Teaching.*

**Ülker VANCİ**, Assist.Prof.Dr., Lisans, Bilim Uzmanlığı, Dr., Hacettepe Üniversitesi.

*Methodology (ELT), Teacher Training, General Linguistics.*

Hüsnü ENGİNARLAR, Inst. Dr., Lisans, Ankara Üniversitesi, M.A., METU, Dr. Hacettepe Üniversitesi.

ELT Methodology, English Language Testing, Teaching Writing, Linguistics.

Ahmet Edip UYSAL, Prof.Dr., M.A., Aberdeen University; Dr., Ankara Üniversitesi.  
(Part-time)

Folklore, Folk Literature and Literary Criticism.

### M.A. PROGRAM IN ENGLISH LITERATURE

|   |         |
|---|---------|
| ELIT 503 Milton   | (3-0) 3 |
| ELIT 504 Spenser  | (3-0) 3 |
| ELIT 505 20th Century British Novel I                       | (3-0) 3 |
| ELIT 506 20th Century British Novel II                      | (3-0) 3 |
| ELIT 507 20th Century British Drama                         | (3-0) 3 |
| ELIT 508 Shakespearean Drama                                | (3-0) 3 |
| ELIT 509 Approaches to Literary Criticism                   | (3-0) 3 |
| ELIT 510 The Rise and Development of the English Novel      | (3-0) 3 |
| ELIT 511 The Romantic Period                                | (3-0) 3 |
| ELIT 513 20th Century British Poetry                        | (3-0) 3 |
| ELIT 514 Chaucer  | (3-0) 3 |
| ELIT 515 The Victorian Novel                                | (3-0) 3 |
| ELIT 516 Literature in the Middle Ages                      | (3-0) 3 |
| ELIT 517 Literature in the Renaissance                      | (3-0) 3 |
| ELIT 518 Literature in the 17th Century                     | (3-0) 3 |
| ELIT 519 Literature in the Restoration and the 18th Century | (3-0) 3 |

### ELIT 520 The Victorians

(3-0) 3

### ELIT 521 Literature in the 20th Century

(3-0) 3

### ELIT 601 Social Aspects of Literature

(3-0) 3

### ELIT 599 Master's Thesis

(Non-Credit)

### ELIT 800 Special Studies

(4-0) (Non-Credit)

### Ph.D. PROGRAM IN ENGLISH LITERATURE

### ELIT 602 Modernism in Literature

(3-0) 3

### ELIT 603 Philosophical Aspects of Literature

(3-0) 3

### ELIT 605 Psychological Aspects of Literature

(3-0) 3

### ELIT 606 Shakespearean Criticism

(3-0) 3

### ELIT 607 T.S. Eliot

(3-0) 3

### ELIT 608 W.B. Yeats

(3-0) 3

### ELIT 609 Thomas Hardy

(3-0) 3

### ELIT 610 Contemporary Drama

(3-0) 3

### ELIT 611 Philosophy of Literary Criticism

(3-0) 3

### ELIT 612 Stylistics

(3-0) 3

|   |                    |  |                    |
|---|--------------------|--|--------------------|
| ELIT 613 Seminar on Satire and Irony  | (3-0) 3            | ELT 513 General Linguistics for Language Teaching  | (3-0) 3            |
| ELIT 615 Comparative Studies in Modern Drama  | (3-0) 3            | ELT 515 Sociolinguistics in English Language Teaching  | (3-0) 3            |
| ELIT 616 The 19th Century   | (3-0) 3            | ELT 516 Approaches in the Teaching of Literature   | (3-0) 3            |
| ELIT 617 Myth, History and Literature   | (3-0) 3            | ELT 517 Materials Evaluation and Development in English Language Teaching  | (3-0) 3            |
| ELIT 618 Elizabethan Drama  | (3-0) 3            | ELT 518 English Language Testing   | (3-0) 3            |
| ELIT 619 Comparative Studies in the Novel   | (3-0) 3            | ELT 520 English-Turkish Contrastive Analysis   | (3-0) 3            |
| ELIT 620 Restoration Drama  | (3-0) 3            | ELT 521 Cultural Aspects of Language Teaching  | (3-0) 3            |
| ELIT 699 Ph.D. Dissertation   | (Non-Credit)       | ELT 525 Approaches in ELT  | (3-0) 3            |
| ELIT 800 Special Studies  | (4-0) (Non-Credit) | ELT 526 Techniques in ELT  | (3-0) 3            |
| M.A. PROGRAM IN ELT   |                    |  |                    |
| ELIT 506 Language Acquisition   | (3-0) 3            | ELT 599 Master's Thesis  | (Non-Credit)       |
| ELIT 507 Curriculum Development for English for Specific Purposes   | (3-0) 3            | ELIT 800 Special Studies   | (4-0) (Non-Credit) |
| ELIT 509 Literature in the Teaching of English  | (3-0) 3            | DESCRIPTION OF GRADUATE COURSES IN M.A. PROGRAM IN ENGLISH LITERATURE  |                    |
| ELIT 503 Milton   | (3-0) 3            | Lawrence and Forster will be examined critically.  |                    |
| A Critical study of selected works of John Milton including Paradise Lost, Paradise Regained, L'Allegro, Il Penseroso, and Comus. |                    |  |                    |
| ELIT 504 Spenser  | (3-0) 3            | ELIT 506 20th Century British Novel II   |                    |
| Spenser's works, especially, The Faerie Queene, will be discussed as representative specimens of Elizabethan poetry.              |                    |  |                    |
| ELIT 505 20th Century British Novel I   | (3-0) 3            | Works of significant novelists from the thirties through the Post-War period to the present day will be studied. |                    |
| ELIT 507 20th Century British Drama   |                    |  |                    |
| Significant novels of Conrad, Woolf, Joyce, 374   |                    |  |                    |
| In-depth study of trends and works in modern British drama, including plays by Osborne, Bolt, Pinter, Arden, and other            |                    |  |                    |

|   |         |   |         |
|---|---------|---|---------|
| significant dramatists.   |         | ELIT 508 Shakespearean Drama                                | (3-0) 3 |
| In-depth study of selected major Shakespearean plays.   |         | ELIT 509 Approaches to Literary Criticism                   | (3-0) 3 |
| <b>ELIT 510 The Rise and Development of the English Novel</b>   |         |   |         |
| The history of the English novel from its origins through the Victorian period will be covered and selected significant novels will be studied in depth.  | (3-0) 3 | ELIT 511 The Romantic Period                                | (3-0) 3 |
| <b>ELIT 511 The Romantic Period</b>   |         |   |         |
| Significant characteristics of the Romantic period and Romanticism will be discussed and selected works of prose and poetry will be studied. Among the authors to be considered are Burns, Coleridge, Wordsworth, Lamb, Hazlitt, Blake, Scott, De Quincey, Byron, Shelley, Keats. | (3-0) 3 | ELIT 512 Literature in the 17th Century                     | (3-0) 3 |
| <b>ELIT 513 20th Century British Poetry</b>   |         |   |         |
| Significant characteristics of modern English poetry will be studied with emphasis on selected works of T.S. Eliot, Yeats, Lawrence, Graves, Bejeman, Auden, Dylan 375  | (3-0) 3 | ELIT 514 Chaucer  | (3-0) 3 |
| Chaucer's role in the development of English literature and a study of his major works including Canterbury Tales.  |         | ELIT 515 The Victorian Novel                                | (3-0) 3 |
| <b>ELIT 516 Literature in the Middle Ages</b>   |         |   |         |
| Representative texts are used to study the courtly love and romance traditions, verse romances and Medieval drama. (Works to be selected from Chaucer, Malory, the Pearl poet, etc.)  | (3-0) 3 | ELIT 517 Literature in the Renaissance                      | (3-0) 3 |
| Characteristics of the Renaissance spirit as reflected in English literature are studied in selected works of drama, poetry and prose. (Works to be selected from Sidney, Spenser, Marlowe, Decker, Middleton, Shakespeare).  | (3-0) 3 | ELIT 518 Literature in the 18th Century                     | (3-0) 3 |
| Representative works and genres are studied in the context of social and intellectual trends of the period. (Works to be selected from Milton, Donne, Marvell, Johnson, etc.)   | (3-0) 3 | ELIT 519 Literature in the Restoration and the 18th Century | (3-0) 3 |
| Representative works and genres are studied in the context of the social and intellectual   |         | <b>ELIT 513 20th Century British Poetry</b>                 |         |

trends of the period. (Works to be selected from Pope, Dryden, Swift, Johnson, Fielding, Defoe, etc.)

### ELIT 520 The Victorians

(3-0) 3

Representative examples of the poetry and prose of the Victorian Age are studied as a means of understanding and evaluating the social, moral and scientific issue of this period. (Works to be selected from Arnold, Huxley, Ruskin, Dickens, G. Eliot, Oscar Wilde, Tennyson, Browning, Butler, etc.)

## DESCRIPTION OF GRADUATE COURSES IN Ph.D. PROGRAM IN ENGLISH LITERATURE

### ELIT 601 Social Aspects of Literature

(3-0) 3

Literary works are studied as sources of social evidence providing insight into the problems at the root of social conflicts.

### ELIT 602 Modernism in Literature

(3-0) 3

The beginning and nature of modernism are examined through the writings of such experimentalists as Eliot, Pound, Joyce, Woolf, Yeats, and Conrad. The works of Freud and Frazer are considered with reference considered with reference to the sense of cultural relativism and awareness of the irrational and the workings of the unconscious which are pervasive in much of modernist writing. The technical variations of modernist literature are studied in detail.

### ELIT 603 Philosophical Aspects of Literature

(3-0) 3

This course will analyse the importance of certain philosophical traditions to great dominant philosophical assumptions and ideas in classical and contemporary literary texts, and the importance of these ideas to

### ELIT 521 Literature in the 20th Century

(3-0) 3

Major works of the significant writers of the 20th century are studied as a means of acquiring a complete understanding of these writers' attitudes towards basic human and social issues of the period. (Works of Conrad, Woolf, Lawrence, Forster, Yeats, T.S. Eliot, Auden, Orwell, Osborne, Pinter, etc.)

### ELIT 599 Master's Thesis

(Non-Credit)

### ELIT 800 Special Studies

(4-0) (Non-Credit)

the texts as works of literature.

### ELIT 605 Psychological Aspects of Literature

(3-0) 3

After basic concepts, theories and trends of psychology are introduced, this course concentrates on investigating representative literary works in the light of these trends.

### ELIT 606 Shakespearean Criticism

(3-0) 3

Shakespeare's works are studied and analysed in the light of different schools of criticism.

### ELIT 607 T.S. Eliot

(3-0) 3

Early 20th century in poetry, Eliot's personal and intellectual background, how this background is reflected in his work. A study of the poetry, drama and critical writings. Eliot's search for moral values and artistic criteria.

### ELIT 608 W.B. Yeats

(3-0) 3

Yeats' life in Ireland. The search for personal and national identity. Literature as a means for this search. Yeats's pursuits in

the world of ideas and art. A study of his poetry and other writings.

### ELIT 609 Thomas Hardy

(3-0) 3

The major novels, stories and poems of T. Hardy are studied critically and compared with the works of his contemporaries.

### ELIT 610 Contemporary Drama

(3-0) 3

This course will analyse and survey the trends and nature of contemporary drama from the late 1950s to the present. A wide range of plays will be considered, and will include recognized contemporary classics as well as plays produced within the last few years.

### ELIT 611 Philosophy of Literary Criticism

(3-0) 3

This course will constitute a short history of contemporary literary theory in practice. Actual examples of 20th century criticism about the same works of literature, but from different critical schools, will be compared and analysed for their respective goals, strengths, and weaknesses as alternative approaches to literature.

### ELIT 612 Stylistics

(3-0) 3

Drawing from a wide range of texts from a variety of different periods, this course investigates the theoretical and methodological character of stylistics in the light of recent advances in literary theory and linguistic studies. The interactive and macro-structural organization of texts are studied with a view to providing guidelines for the development of models which can present a systematic description of literary texts.

### ELIT 613 Seminar on Satire and Irony

(3-0) 3

"Satire" and "irony" are studied as literary devices, and the former as a literary genre through representative Medieval, Renaissance, Enlightenment and modern works. Reader-text and society-text relations in satire and irony are also investigated. (Works to be selected from Langland, "Revenge tragedy", Swift, Pope Dryden, Evelyn Waugh etc.)

### ELIT 615 Comparative Studies in Modern Drama

(3-0) 3

Works of significant English dramatists of the 19th and 20th centuries are studied and compared with their European and American counterparts. (Works to be selected from Chekov, Ibsen, Strindberg, Albee, Lorca, Pirandello, O'Neill, Arden, Beckett, Osborn, etc.)

### ELIT 616 The 19th Century

(3-0) 3

Representative examples of the Victorian novel are studied critically with emphasis on the changes in the techniques and themes in response to the changes in the concept of the universe and of man.

### ELIT 617 Myth, History and Literature

(3-0) 3

Myth and history are studied with reference to their implications on literary trends and works.

### ELIT 618 Elizabethan Drama

(3-0) 3

Works of significant dramatists of the time are studied: in-depth study of major Shakespearean plays is included.

# ELIT 619 Comparative Studies in the Novel

(3-0) 3

Works of significant English novelists of the late 19th and early 20th centuries are studied and compared with those of their European and American contemporaries. (Works to be selected from Flaubert, Balzac, Zola, Fitzgerald, Turgeney, Dostoyevsky, Conrad, Hardy, etc.)

# ELIT 620 Restoration Drama

(3-0) 3

Major works of Restoration Drama are studied with emphasis of the Comedy of Manners. Works to be selected from Sheridan, Congreve, Wycherly, Vanbrugh.

# ELIT 699 Ph.D. Dissertation

(3-0) 3

# ELIT 800 Special Studies

(3-0) 3

## DESCRIPTION OF GRADUATE COURSES IN M.A. PROGRAM IN ENGLISH LANGUAGE TEACHING

# ELT 506 Language Acquisition

(3-0) 3

Research in language acquisition. Differences between child and adult language. Similarities and differences between native and foreign language acquisition.

# ELT 507 Curriculum Development for English for Specific Purposes

(3-0) 3

Principles of curriculum development and course design as applied to English for Specific Purposes (ESP) are surveyed. Topics include language functions, notions and speech acts. Principles of functional/notional or communicative syllabus strategies and techniques in designing questionnaires and structured interviews to determine students language needs; discourse analysis to find out the structure of discourse in the physical and social science texts and teacher training.

# ELT 509 Literature in the Teaching of English

(3-0) 3

An examination of the significant contributions which literature can make to the process and purpose of learning English as a foreign language. Poetry, prose and drama in

the EFL classroom. Choosing appropriate texts for different levels of learners.

# ELT 513 General Linguistics for Language Teaching

(3-0) 3

Review of the basic patterns of the English language with suggestions for teaching those patterns to students of English as a foreign language.

# ELT 515 Sociolinguistics in English Language Teaching

(3-0) 3

A survey of sociolinguistic theories and research findings which illuminate the learning and use of English as a foreign language, with particular emphasis on practical applications.

# ELT 516 Approaches in the Teaching of Literature

(3-0) 3

Approaches to the analysis and pedagogical treatment of literary texts. Classroom treatment of the short story, the novel, poetry, and drama. Training students to become critical readers of literature and to produce critical explications of what they have read. Methods of measuring literary appreciation. Adjusting the teaching of literature to the target audience.

# ELT 517 Materials Evaluation and Development in English Language Teaching

(3-0) 3

Methods of evaluating textbooks and adapting techniques to match course objectives in order to achieve effective language teaching.

# ELT 518 English Language Testing

(3-0) 3

Construction of English language tests: item analysis and interpretation of test scores; analysis and objective tests; procedures in preparing different kinds of test items appropriate for testing different language skills; practice in item writing and statistical methods.

# ELT 520 English-Turkish Contrastive Analysis

(3-0) 3

Comparison of English and Turkish structures with special emphasis on transfer problems from either language.

# ELT 521 Cultural Aspects of Language Teaching

(3-0) 3

This course is designed to give language teachers a basis for introducing a cultural component into their teaching. Students are given a perspective on how language and culture interact, and on the significant distinction between understanding and participating in a foreign culture.

# ELT 525 Approaches in ELT

(3-0) 3

A review of traditional and current methods in language teaching.

# ELT 526 Techniques in ELT

(3-0) 3

A review of techniques in teaching language skills, listening, speaking, reading and writing.

# ELT 599 Master's Thesis

(Non-Credit)

# ELT 800 Special Studies

(4-0)

(Non-Credit)